

VOLTAGE TOYHAULERS BY DUTCHMEN



VOLTAGE

TOY HAULERS BY



Dutchmen®

Legendary Innovation. Trailblazing Value.

VOLTAGE

There's a reason Voltage is the most popular toy hauler in its class. Our designers held nothing back when it came to equipping the Voltage with feature-rich amenities and ample amounts of storage. Tall ceilings, a spacious executive bedroom and a gourmet kitchen featuring a stainless-steel faucet and sink, convection oven and a large under range oven set Voltage apart from all the others. It's truly first in class.

**NOT ALL TOY HAULERS
ARE CREATED EQUAL.**

WELCOME HOME
FULL-FEATURE RV LIVING



Voltage 3995

The Dutchmen Voltage was created for extreme adventures. For toys large and small, few and many, standard and extreme – there's room for them all in this spacious toy hauler. These RVs welcome the extreme elements with an optional 3rd A/C, Max Flow duct system, laminated slide boxes, tank heaters and superior insulation ratings.



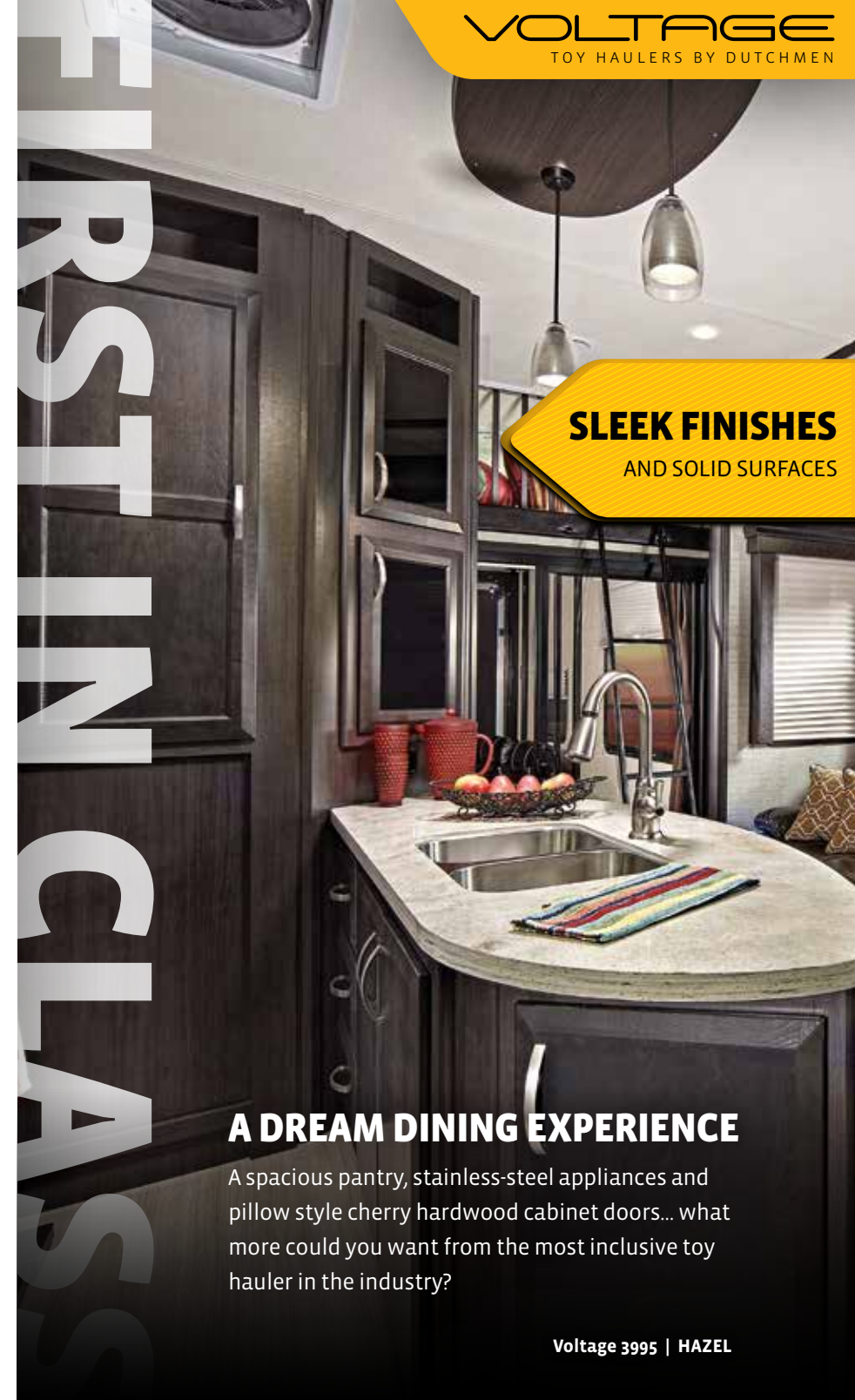
HIDDEN ARMRESTS



LIVING IN LUXURY

Massaging, heated and LED-lit residential furniture, oversized pantries and upgraded fixtures take RV living to unequal heights in the all-new Voltage toy hauler. Once you've let it all soak in, you can begin to enjoy the residential fireplace, lighted backsplash and large LED TV with satellite prep.

Voltage 3995 | HAZEL



SLEEK FINISHES AND SOLID SURFACES

A DREAM DINING EXPERIENCE

A spacious pantry, stainless-steel appliances and pillow style cherry hardwood cabinet doors... what more could you want from the most inclusive toy hauler in the industry?

Voltage 3995 | HAZEL

**NOTHING
ELSE QUITE
LIKE IT**

For those looking to get away - toy hauling or not - the Voltage is redesigning the luxury RV market with a Zero-Gravity ramp door, an industry-leading 7' tall slide-out ceiling height and benchmark-setting carrying capacities.

**RAMP DOORS,
REDESIGNED**

THE ZERO-GRAVITY RAMP DOOR OPENS AND CLOSES WITH JUST ONE FINGER.



**ZERO-GRAVITY
RAMP DOOR**

Raise and lower the ramp door with just one finger. MORryde's Zero-Gravity ramp door handles as if the door is weightless, creating the safest ramp door in the industry. Now with an electric locking system and spring assist, setup and teardown is easier than ever.



**A FAST TRACK
PARTY DECK**

The quick and easy "pin-less" patio system from MORryde



**CONVENIENCE
WITHIN REACH**

USB charging stations in multiple locations



**WHOLE-HOME
ACCESS**

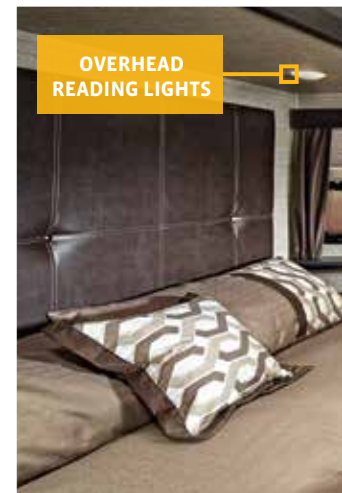
Remotely control your RV with the iN-Command system

**A SPACE TO
PLAY, WORK
AND STORE**



Voltage 3995

**OVERHEAD
READING LIGHTS**



EVERY VOLTAGE FEATURES A CENTRAL VACUUM SYSTEM



YOUR NEW FAMILY ROOM

Voltage's multi-functional space was designed with every type of traveler in mind. When it's not safely storing your more adventurous toys, you can transform it into an inviting gathering space for work, games or a room to enjoy mealtime with family and friends.

BATHROOM AMENITIES

The full fiberglass shower features a skylight to provide natural lighting as you get ready in front of the large bathroom mirror with hardwood cabinet storage.

PLENTY OF WARDROBE SPACE

SERENE SLEEPING QUARTERS

From the garage to your master suite, the Voltage delivers a first-class experience to every room, with residential duvet covers for true relaxation and LED puck lighting that's easy on the eyes.

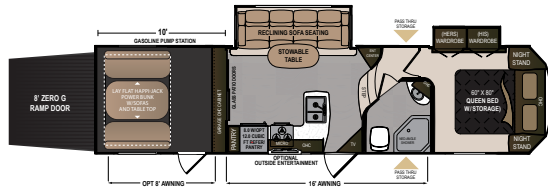
Voltage 3995 | HAZEL

INTERIOR DÉCOR CHOICES

Hazel

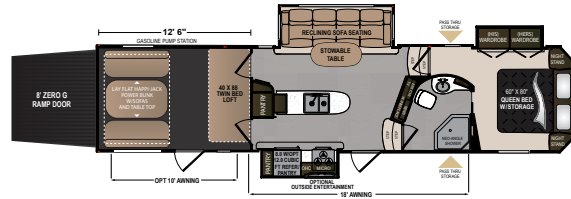
Raven

VOLTAGE FLOOR PLANS



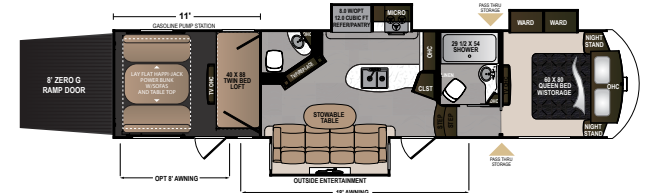
VOLTAGE FIFTH WHEEL | 3005

Ext. Length: 35' Ext. Height: 13' 1" Average Shipping Weight: 11,918 Sleeps: 7



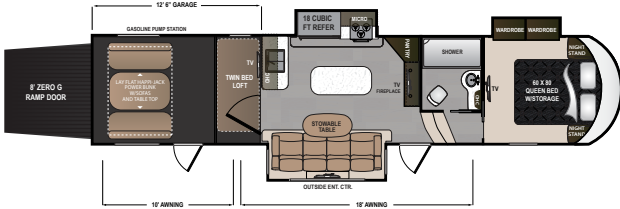
VOLTAGE FIFTH WHEEL | 3305

Ext. Length: 39' 2" Ext. Height: 13' 2" Average Shipping Weight: 13,165 Sleeps: 8



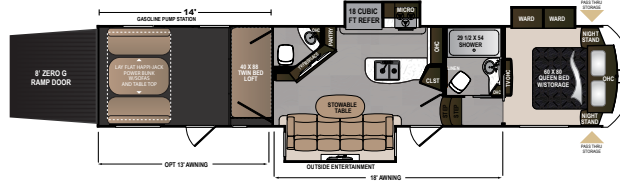
VOLTAGE FIFTH WHEEL | 3605

Ext. Length: 39' Ext. Height: 13' 3" Average Shipping Weight: 13,794 Sleeps: 8



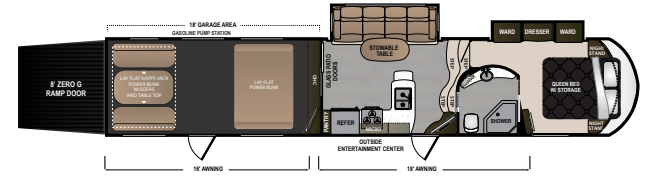
VOLTAGE FIFTH WHEEL | 3655

Ext. Length: 39' 3" Ext. Height: 13' 3" Average Shipping Weight: TBD Sleeps: 8



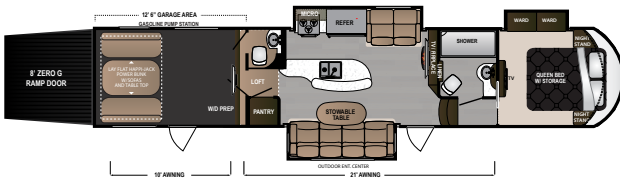
VOLTAGE FIFTH WHEEL | 3805

Ext. Length: 42' 6" Ext. Height: 13' 4" Average Shipping Weight: 14,836 Sleeps: 7



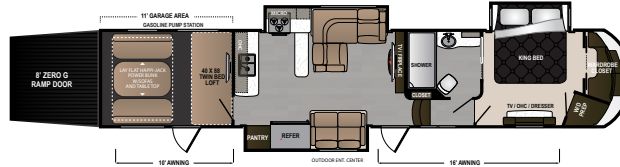
VOLTAGE FIFTH WHEEL | 3815

Ext. Length: 43' 11" Ext. Height: 13' 4" Average Shipping Weight: 14,705 Sleeps: 9



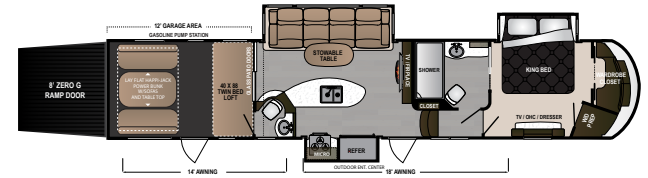
VOLTAGE FIFTH WHEEL | 3895

Ext. Length: 43' 0" Ext. Height: 13' 4" Average Shipping Weight: 15,240 Sleeps: 8



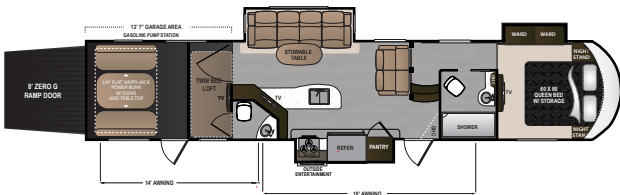
VOLTAGE FIFTH WHEEL | 3975

Ext. Length: 44' 0" Ext. Height: 13' 4" Average Shipping Weight: 15,472 Sleeps: 7



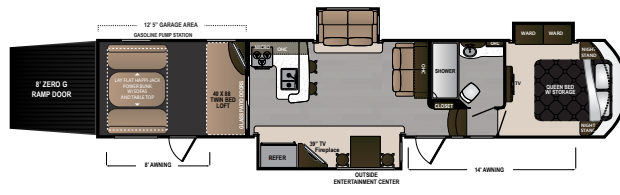
VOLTAGE FIFTH WHEEL | 3995

Ext. Length: 43' 9" Ext. Height: 13' 4" Average Shipping Weight: 15,476 Sleeps: 8



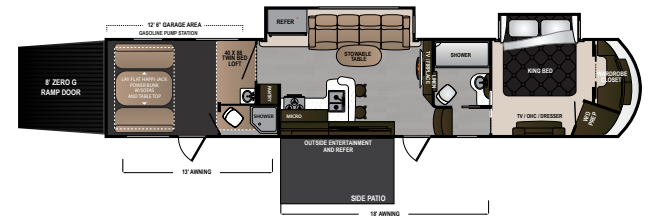
VOLTAGE FIFTH WHEEL | 4005

Ext. Length: TBD Ext. Height: TBD Average Shipping Weight: TBD Sleeps: 8



VOLTAGE FIFTH WHEEL | 4105

Ext. Length: 43' 10" Ext. Height: 13' 4" Average Shipping Weight: 14,953 Sleeps: 7



VOLTAGE FIFTH WHEEL | 4155

Ext. Length: 43' 11" Ext. Height: 13' 4" Average Shipping Weight: 16,036 Sleeps: 8

DISCLAIMER: Product information is as accurate as possible as of the brochure publication date. All features, floorplans and specifications in this brochure are subject to change without notice. Please consult Dutchmen's website at www.Dutchmen.com for current product information and specifications. Tow Vehicle Disclaimer. **CAUTION:** Owners of Dutchmen recreational vehicles are solely responsible for the selection and proper use of tow vehicles. All customers should consult with a motor vehicle manufacturer or their dealer concerning the purchase and use of suitable tow vehicles for Dutchmen products. Dutchmen disclaims any liability or damages suffered as a result of the selection, operation, use or misuse of a tow vehicle. DUTCHMEN'S LIMITED WARRANTY DOES NOT COVER DAMAGE TO THE RECREATIONAL VEHICLE OR THE TOW VEHICLE AS A RESULT OF THE SELECTION, OPERATION, USE OR MISUSE OF THE TOW VEHICLE. REFERENCE DUTCHMEN MANUFACTURING OWNERS MANUAL FOR LIMITED WARRANTY DETAILS.

VOLTAGE STANDARDS AND OPTIONS

MANDATORY OPTIONS

Central Vacuum with Tools and Dust Pan

Exterior Entertainment Center

NitroFill - Nitrogen Filled Tires

Voltage Exterior Package

Voltage Luxury Interior Package

VOLTAGE LUXURY INTERIOR PACKAGE

12" Diamond Plate along Garage Wall

2 Indoor/Outdoor Speakers in Garage and Main Living Area

2,500-lb Tie Downs

2nd 15k-BTU Bedroom A/C

3-Burner Range with Upgraded Burner

32"-39" LCD HD Main TV

60"x80" Queen Bed (Select Models)

72"x80" King Bed (Select Models)

8 cu. ft. Refrigerator with Pantry

Atwood 10-Gallon Gas Electric Water Heater with DSI and 19.7 gal/hr Recovery

Back Lighted Backsplash

Bedroom TV

Convection Microwave

Full Sized 21" Oven

Furion Stereo System with HDMI/AM/FM/DVD/Bluetooth

Insulated Heat and A/C Ducts

Metal Ram Air Vents

Pendant Lighting

Pillow Style Cherry Hardwood Cabinet Doors

Pleated Night Shades Through out the Entire Coach

Pre-Wired and Framed for 2nd A/C

Pressed Wood Steps

Range Hood with Fan and Lights

Residential Duvent Covers

Satellite Prep at All Four TV Locations

Solid-Surface Kitchen Countertops

Solid-Surface Sink Covers

Stainless-Steel Kitchen Sink

Tuff Ply Garage Flooring

Upgraded Beauflor Linoleum

Upgraded Residential Faucet

Upgraded Residential Furniture with LED Lighted, Heated, and Massaging Seats

Upgraded Speakers with Powered Subwoofer

USB Power Stations by Night Stand and in Pass Through Storage Area

Voltage HappiJac Electric Bed and Roll Over Sofa System with Table

VOLTAGE EXTERIOR PACKAGE

1" Thick Slam Latch Baggage Doors

16" Custom Aluminum Wheels

2nd Awning Over Garage Entrance Door

50-amp Service with Cord and Indicator Lights

7,000-lb Axles w/ Ultra Lube

7,040-lb Load Range E-Rated HD Tires (per Axle)

Exterior Convenience Center with Water Connections

Fold Down Roof Ladder

Frameless Tinted Safety Glass Windows

Fuel Tank with Pump Station (30-GAL)

Full Sized Spare Tire with Carrier

Fully Walkable Roof

Hardwire Solar Prep

Large Electric Adjustable Awning with LED Lights

Omni Directional Cable/Satellite Antenna

Painted Front Cap

Upgraded Graphics with 3-Year Warranty

Water Heater Bypass

Zero G Ramp Door by MORryde

GENERATOR OPTIONS

Generator Ready (Generator Prep) (Mandatory without Onan 5.5-kw Gen Option)

Onan 5.5-kw Gas Generator

OPTIONS

12-Volt Tank Heater with Interior Switches

18 cu. ft. Four Door Refrigerator Standard on Select Models (3655, 3895, 3975, 3995, 4005, 4105, 4155)

6-Point Hydraulic Auto-Leveling System

Dual Pane Safety Glass Windows

Load Range G-Rated Tires

Ramp Door Patio with Entry Steps and Awning

Three Season Patio Doors IPO Screen Wall

Voltage Logo Deck Chairs (2 per Box)

CODES & SEALS

CSA Construction and Seal

RVIA Seal

State Seal (where applicable)

Winterization (Oct - April)

VOLTAGE SPECIFICATIONS

DIMENSIONS				WEIGHTS (LBS.)			TANKS (GALS.)		
FLOORPLAN	*EXTERIOR TRAVEL LENGTH	EXTERIOR WIDTH	EXTERIOR HEIGHT (WITH A/C)	**AVERAGE SHIPPING WEIGHT	DRY HITCH WEIGHT	CARGO CARRYING CAPACITY	***FRESH WATER CAPACITY	GREY WATER CAPACITY	BLACK WATER CAPACITY
3005	35', 0"	100"	157"	11,998	2,639	4,502	96	68	38
3305	39', 2"	100"	158"	13,164	2,896	3,336	96	68	38
3605	39', 0"	100"	159"	13,831	3,052	2,969	96	76	83
3655	39', 3"	100"	159"	TBD	TBD	TBD	150	86	38
3805	42', 6"	100"	160"	14,889	3,489	3,111	96	76	86
3815	43', 11"	100"	160"	14,852	2,887	5,148	96	75	45
3895	43', 0"	100"	160"	15,350	2,951	4,650	96	107	90
3975	44', 0"	100"	160"	15,533	3,575	4,467	96	90	45
3995	43', 9"	100"	160"	15,669	3,741	4,331	96	76	76
4005	44', 1"	100"	160"	15,681	3,149	3,109	96	76	86
4105	43', 9"	100"	160"	15,220	3,046	4,780	96	107	45
4155	43', 11"	100"	160"	16,233	3,615	3,767	96	107	90

*Length is defined as the distance from the centerline of hitch pin/coupler to rear bumper of trailer. **Our weights represent how most units are built, inclusive of many commonly-ordered options. ***Fresh water capacity includes water heater capacity.

VOLTAGE FIRST^{IN} CLASS



Dutchmen—A North American Campground Classic.

Few manufacturers have built RVs for 25+ years, and only one has set the standard for innovation AND value. Dutchmen IS “A North American Campground Classic.”



Dutchmen®

Legendary Innovation. Trailblazing Value.

MORE STANDARD FEATURES MORE VALUE

Dutchmen RVs turn more heads on the lot and in the campground than any other. Why? While other manufacturers offer features as options, Dutchmen tends to make those same features standard. Call it “bang for the buck,” “more for your money,” or simply “more value.” **We’ve built a reputation for bringing RV owners more standard features for less money** for more than 25 years... and it’s a reputation we plan to keep.

PO BOX 2000 • 2164 Caragana Court • Goshen, Indiana 46527 • Sales: 574.537.0600 • www.dutchmen.com

VOL-HM0117-24K

3000 STRONG NATION WIDE DEALER NETWORK

More than 300 Dutchmen dealers across North America and our industry-leading service center in Goshen, Indiana, combine for your peace of mind before, during and after the sale. Rest assured no matter where your travels take you, **the best-resourced RV manufacturing company in the world is behind you all the way.**

To check for recent updates to floorplans and specifications. Scan this QR CODE with your favorite QR Reader application.



www.dutchmen.com

Visit us online to see all of the Dutchmen brands, innovative models and spacious floor plans.



At Dutchmen, quality is our standard. **Every single Dutchmen RV that comes off the line receives its own pre-delivery inspection.** Typically, a competitor performs random inspections, meaning you won’t find this commitment to quality anywhere else.

Your local dealer

LaMESA REC VAN

LaMesaRV.com
800-496-8778

From giving advice to servicing products, we consider our loyal dealers the best resource for learning about Dutchmen products.

TRITON
BY VOLTAGE



TOY HAULERS BY

Legendary Innovation. Trailblazing Value.

DESIGNED FOR
**LEGENDARY
ADVENTURE**



DESIGNED FOR LEGENDARY ADVENTURE.

HARDWOOD CABINETRY

MAX FLOW AIR DUCTS

STAINLESS-STEEL APPLIANCES

KITCHEN HUTCH

SOLID-SURFACE COUNTERTOPS

SLEEP SOUNDLY

The Triton features a 60x80-inch queen bed, while also providing a residential duvet cover, pleated night shades and a second 15,000-BTU air conditioner.

Triton 3551

Triton 3551

TRITON

THE TRITON is the titan of its industry delivering numerous upgraded features, such as residential furniture, a large electric awning, dual 15K A/C's and Tuff Ply garage flooring for extreme outdoor trips.



30-GALLON FUEL STATION



7,000LB AXLES



**REST
OR
PLAY**

BUNKS

GARAGE

BUILT FOR MILES

- › Lay flat Happijac bed lift system helps load the tallest and widest toys in your collection.
- › Enjoy an upgraded sound system with multiple zones and primed with HDMI/AM/FM/CD/DVD and Bluetooth capabilities.
- › Tons of overhead storage, a 30-gallon fuel station and dynamic floorplans fit all your needs.



TRANSFORMING YOUR LIVING SPACE

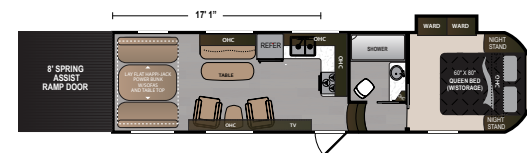
The rear of your RV is set to fit your needs, from beds, residential furniture, a large table perfect for dining or simply a spot to store your ATVs and dirt bikes.



DELUXE BATHROOM

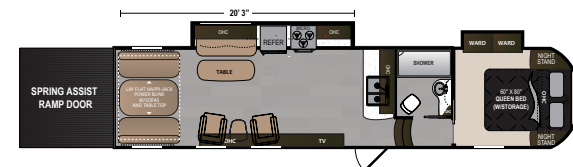
Designed for optimal comfort, Triton bathrooms feature hardwood cabinetry, a stainless-steel sink and full fiberglass shower.

TRITON FLOORPLANS



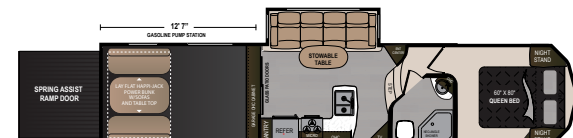
TRITON | 2951

Ext. Length: 33' 6" Ext. Height: 13' 4"
Average Shipping Weight: 10,300 Sleeps: 7



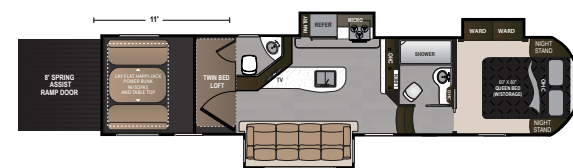
TRITON | 3351

Ext. Length: 36' 5" Ext. Height: 13' 4"
Average Shipping Weight: 11,230 Sleeps: 7



TRITON | 3451

Ext. Length: 37' 8" Ext. Height: 13' 4"
Average Shipping Weight: 11,190 Sleeps: 7



TRITON | 3551

Ext. Length: 39' 0" Ext. Height: 13' 4"
Average Shipping Weight: 12,784 Sleeps: 8

TRITON DÉCOR

TIMBER

ECLIPSE

TRITON SPECIFICATIONS

DIMENSIONS			WEIGHTS (LBS.)			TANKS (GALS.)			
FLOORPLAN	EXTERIOR TRAVEL LENGTH	EXTERIOR WIDTH	HEIGHT (WITH A/C)	**AVERAGE SHIPPING WEIGHT	DRY HITCH WEIGHT	CARGO CARRYING CAPACITY	***FRESH WATER CAPACITY	GREY WATER CAPACITY	BLACK WATER CAPACITY
2951	33', 6"	100"	160"	10,458	2,494	6,342	92	76	38
3351	36', 5"	100"	160"	11,200	2,750	5,600	92	38	38
3451	37', 8"	100"	160"	11,295	2,614	5,505	92	68	38
3551	39', 0"	100"	160"	12,784	2,980	4,016	92	76	86

*Length is defined as the distance from the centerline of hitch pin/coupler to rear bumper of trailer. **Our weights represent how most units are built, inclusive of many commonly-ordered options. ***Fresh water capacity includes water heater capacity.

TRITON STANDARDS AND OPTIONS

MANDATORY FEATURES

Nitro Fill Tires
Rear Electric Jacks
Triton Exterior Package
Triton Garage Package
Triton Happijac Electric Bed and Roll Over Sofa System with Table
Triton Interior Package

TRITON INTERIOR PACKAGE

1.0 cu. ft. Microwave
15,000 - BTU Bedroom A/C with Thermostat Sensor
3 Burner Range w/ Upgraded Burner
32"-39" LCD HD Main TV
60"x80" Queen Bed (Select Models)
8 cu. ft. Refrigerator w/ Pantry
Atwood 6-Gallon Gas Electric Water Heater w/DSI and 19.7 gal/hr Recovery
Bedroom TV Prep
Cable/Satellite Prep
Furion Stereo System with HDMI/AM/FM/DVD/Bluetooth
Pleated Night Shades throughout the entire coach
Range Hood with Fan and Lights
Residential Duvet Covers
Solid-Surface Kitchen Countertops
Stainless-Steel Kitchen Sink
Upgraded Residential Furniture

TRITON EXTERIOR PACKAGE

1" Thick Baggage Doors
16" Aluminum Wheels
50-amp Service with 50' Cord and Indicator Lights

7,000-lb Axles with Ultra Lube
7,040-lb Load Range E-Rated HD Tires (per Axle)
Fuel Tank w/ Pump Station (30-Gallons)
Fully Walkable Roof w/ TPO Superflex Material (12-Year Warranty)
Large Electric Awning with LED Lights
Omni Directional TV Antenna with AM/FM/Cable Booster
Spare Tire with Carrier
Tinted Safety Glass Windows
Upgraded Graphics with 3-Year Warranty

TRITON GARAGE PACKAGE

2 Indoor/Outdoor Speakers
2,500-lb Tie Downs
Insulated Heat and A/C Ducts
Metal Ram Air Vents
Tuff Ply Garage Flooring

GENERATOR OPTIONS

Generator Ready (Standard)
Onan 5.5 KW Gas Generator

OPTIONS

12-Volt Tank Heaters with Interior Switches
Aluminum Ramp Door Patio System w/ Patio Awning
Dual Pane Safety Glass Windows

CODES AND SEALS

CSA Construction Seal
RVIA Seal
State Seal (Where Applicable)
Winterization (October - April)

Dutchmen—A North American Campground Classic.

Few manufacturers have built RVs for 25+ years, and only one has set the standard for innovation AND value. Dutchmen **IS** "A North American Campground Classic."



MORE STANDARD FEATURES MORE VALUE

Dutchmen RVs turn more heads on the lot and in the campground than any other. Why? While other manufacturers offer features as options, Dutchmen tends to make those same features standard. Call it "bang for the buck," "more for your money," or simply "more value." **We've built a reputation for bringing RV owners more standard features for less money** for more than 25 years... and it's a reputation we plan to keep.

At Dutchmen, quality is our standard. **Every single Dutchmen RV that comes off the line receives its own pre-delivery inspection.** Typically, a competitor performs random inspections, meaning you won't find this commitment to quality anywhere else.



More than 300 Dutchmen dealers across North America and our industry-leading service center in Goshen, Indiana, combine for your peace of mind before, during and after the sale. Rest assured no matter where your travels take you, **the best-resourced RV manufacturing company in the world is behind you all the way.**

PO BOX 2000 • 2164 Caragana Court
Goshen, Indiana 46527 Sales: 574-537-0600
www.dutchmen.com

To check for recent updates to floorplans and specifications. **Scan this QR CODE** with your favorite QR Reader application.



www.dutchmen.com

Visit us online to see all of the Dutchmen brands, innovative models and spacious floorplans.

Your local dealer



From giving advice to servicing products, we consider our loyal dealers the best resource for learning about Dutchmen products.

TRI-HM0117-24K

DISCLAIMER: Product information is as accurate as possible as of the brochure publication date. All features, floorplans and specifications in this brochure are subject to change without notice. Please consult Dutchmen's website at www.Dutchmen.com for current product information and specifications. Tow Vehicle Disclaimer. **CAUTION:** Owners of Dutchmen recreational vehicles are solely responsible for the selection and proper use of tow vehicles. All customers should consult with a motor vehicle manufacturer or their dealer concerning the purchase and use of suitable tow vehicles for Dutchmen products. Dutchmen disclaims any liability or damages suffered as a result of the selection, operation, use or misuse of a tow vehicle. DUTCHMEN'S LIMITED WARRANTY DOES NOT COVER DAMAGE TO THE RECREATIONAL VEHICLE OR THE TOW VEHICLE AS A RESULT OF THE SELECTION, OPERATION, USE OR MISUSE OF THE TOW VEHICLE. REFERENCE DUTCHMEN MANUFACTURING OWNERS MANUAL FOR LIMITED WARRANTY DETAILS.

EPIC
SERIES



TOY HAULERS BY

Legendary Innovation. Trailblazing Value.



THE **ADVENTURE** THAT
WILL LAST A **LIFETIME**



VOLTAGE
EPIC
SERIES

THE FEATURE HEAVY HAULER

From solid-surface quartz countertops to a full-size 21" oven and 3-burner range with convection microwave, your kitchen space is just a glimpse of what our passengers can expect to find inside and out.

Voltage Epic 3970 | HAZEL

MEET THE **ALL-NEW** EPIC SERIES

You won't find a toy hauler on the market offering more for your money than Voltage's Epic Series, with its highly adaptable garage space and feature-rich living areas. Paired with top of the line MORryde features, like a Zero-Gravity ramp door, "pin-less" patio system and easy entry steps. The Epic Series is your step up to the ultimate RV experience.

HIGH-END FINISHES

The large stainless-steel kitchen sink is perfect for all of your food washing and mealtime preparations, even doubling as an extended countertop with included sink covers.

AMPLE FOOD STORAGE

An 18 cu. ft. refrigerator is complemented by a hefty pantry space to store on-the-go snacks and in-depth meal ingredients, all without bogging down overall kitchen space.

A CONTEMPORARY LIVING SPACE

Once the toys have been stored away and the day has come to an end, Epic's upgraded residential furniture greets you with massaging seats that are also heated and LED-lit to produce a comforting environment flush with spa-like qualities.

Voltage Epic 3970 | HAZEL



VOLTAGE
EPIC
SERIES

S T E P U P Y O U R A D V E N T U R E

DELUXE ENTERTAINMENT

The Epic provides a large LCD HD main TV with a Kenwood three-zone sound system, upgraded soundbar and wireless subwoofer. Your entertainment comes complete with HDMI, DVD and multi-sourced entertainment capabilities.



EPIC

ADVENTURE READY

When you take to the road in an Epic Series toy hauler, you're not the only one benefiting from a luxury ride. The extreme toys you take along will also enjoy a sheltered, secure and smooth trip that delivers innovative operating systems and all the right tools for the haul, making this one completely epic ride.



FIRST-CLASS SLEEPING QUARTERS

You'll come to expect restful nights in a large master bedroom with a memory foam mattress, residential duvet covers and blackout roller shades.



Voltage Epic 3970 | HAZEL

DOVETAIL STORAGE



ROOM FOR YOUR GEAR

These haulers come with space to store all you need for your travels, all out of sight and secure.

YOU'RE IN COMMAND



MORE ROOM FOR REST

Utilizing the Epic's impressive square footage, family members and guests can find space to relax in a loft that features premium finishes and warm reading lights.



A SLEEK BATHROOM

Your bathroom features amenities found in luxury homes, like solid-surface countertops, a sizable vessel bowl sink, as well as ample storage behind pillow style hardwood cabinet doors.



WHOLE-HOME TECHNOLOGY

Your Epic comes with iN-Command, the most in-depth remote operating system in towable RVs.

PLENTY OF BREATHING ROOM

This multi-functional garage space and living area was designed to provide families with options. Whether it's a place to store toys, an area to unwind or a space reserved for mealtime gatherings, you'll never have to worry about running out of room.

Voltage Epic 3970



EPIC

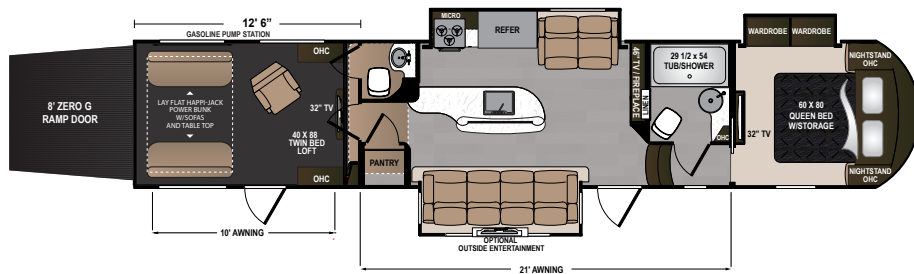
ZERO-GRAVITY RAMP DOOR

Raise and lower the ramp door with just one finger. MORryde's Zero-Gravity ramp door handles as if the door is weightless, creating the safest ramp door in the industry. Now with an electric locking system and a re-designed hinging system, setup and teardown is easier than ever.

ZERO-GRAVITY IN ACTION
EFFORTLESS OPERATION WITH
ADDED SAFETY AND SECURITY

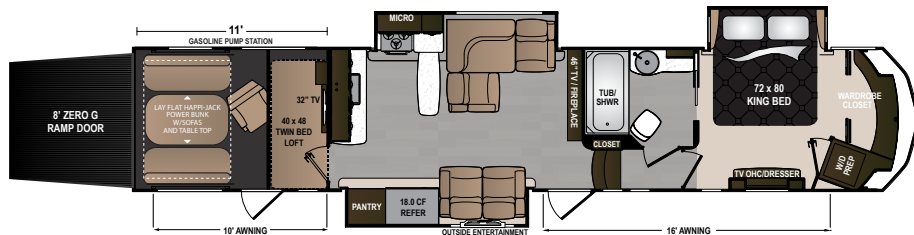


EPIC FLOOR PLANS



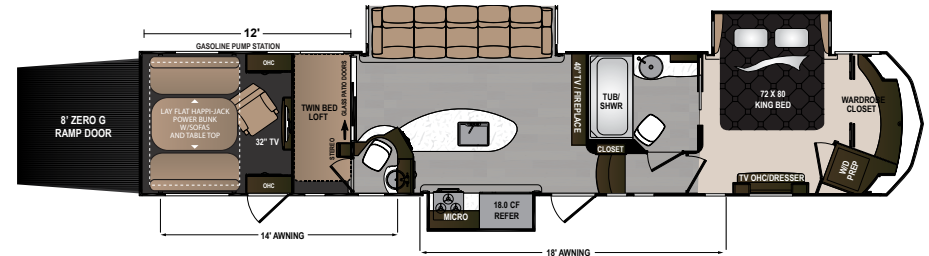
VOLTAGE EPIC SERIES | 3890

Ext. Length: 42' 11" Ext. Height: 13' 3" Average Shipping Weight: 15,880 Sleeps: 8



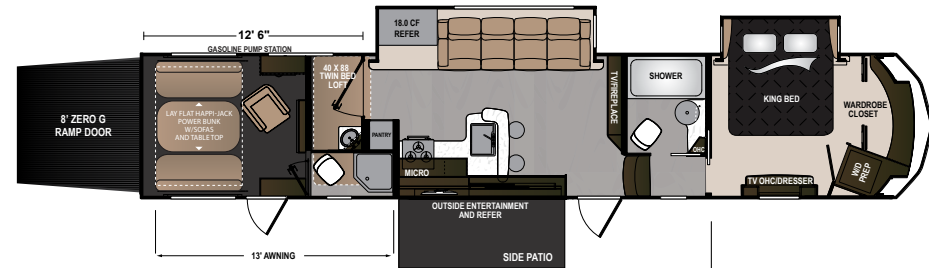
VOLTAGE EPIC SERIES | 3970

Ext. Length: 43' 10" Ext. Height: 13' 4" Average Shipping Weight: 16,171 Sleeps: 8



VOLTAGE EPIC SERIES | 3990

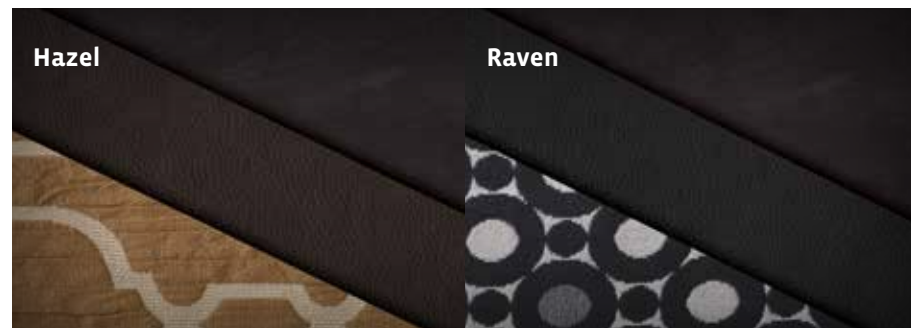
Ext. Length: 43' 9" Ext. Height: 13' 4" Average Shipping Weight: 16,257 Sleeps: 8



VOLTAGE EPIC SERIES | 4150

Ext. Length: 44' 1" Ext. Height: 13' 4" Average Shipping Weight: 16,464 Sleeps: 8

INTERIOR DÉCOR CHOICES



DISCLAIMER: Product information is as accurate as possible as of the brochure publication date. All features, floorplans and specifications in this brochure are subject to change without notice. Please consult Dutchmen's website at www.Dutchmen.com for current product information and specifications. Tow Vehicle Disclaimer. **CAUTION:** Owners of Dutchmen recreational vehicles are solely responsible for the selection and proper use of tow vehicles. All customers should consult with a motor vehicle manufacturer or their dealer concerning the purchase and use of suitable tow vehicles for Dutchmen products. Dutchmen disclaims any liability or damages suffered as a result of the selection, operation, use or misuse of a tow vehicle. DUTCHMEN'S LIMITED WARRANTY DOES NOT COVER DAMAGE TO THE RECREATIONAL VEHICLE OR THE TOW VEHICLE AS A RESULT OF THE SELECTION, OPERATION, USE OR MISUSE OF THE TOW VEHICLE. REFERENCE DUTCHMEN MANUFACTURING OWNERS MANUAL FOR LIMITED WARRANTY DETAILS.

EPIC STANDARDS AND OPTIONS

MANDATORY FEATURES

12V Tank Heater with Interior Switches
18 cu. ft. Four Door Refrigerator
2nd A/C - Bedroom Ducted 15k-BTU with Thermostat Sensor
2nd Awning Over Garage Entrance Door
3rd A/C with Power Management System
6-Point Hydraulic Auto-Leveling System
Central Vacuum with Tools and Dust Pan
Exterior Entertainment Center - 24" LED TV in Locking Cabinet w/ Upgraded Speakers
Lay Flat HappiJac Power Bunk
MORryde Rubber Pin Box
NitroFill - Nitrogen Filled Tires
Ramp Door Patio with Entry Steps and Awning
Removable Edged Cargo Carpet
Residential Convection Microwave Oven
Voltage Chair
Voltage Exterior Package
Voltage Logo Deck Chairs
Voltage Luxury Interior Package
VOLTAGE LUXURY INTERIOR PACKAGE
15k Main A/C with Quiet Cool Technology
2 Indoor/Outdoor Speakers
Adjustable TV Bracket
Atwood 10-Gallon DSI Water Heater w/19.7 GPH Recovery

Atwood 3-Burner Range & Range Cover
Back Lighted Backsplash
Bathroom Power Fan with Rain Sensor and Thermostat
Galley Power Fan with Rain Sensor
Garage Power Fan with Rain Sensor and Thermostat
I Relax Memory Foam Mattress
Jensen iN-Command Operating System
Klipsch Sound Bar with Subwoofer
Large HD LED Living Area TV
LED Puck Lighting
MCD Roller Blinds in the Main Living Area and Bedroom
Night Shades in the Garage
Pendant Lighting
Pressed Wood Steps (Select Models)
Quartz Countertops
Residential Convection Microwave Oven
Residential Duvet Covers
Residential Furniture w/LED Lighted, Massaging, and Heated Seats
Satellite Prep at Every TV Location
Touch Screen Stereo with Remote on Exterior Wall and Zoned Volume Control
Tuff Ply Flooring in Garage and Pass Through Storage Area
USB Power Stations by the Night Stand and in the Outside Pass Through Storage Area

Washer and Dryer Prep
EXTERIOR PACKAGE
1" Thick Metal Slam Latch Baggage Doors
16" Aluminum Wheels
40,000-BTU Furnace
50-amp Service with 50 ft. Cord and Indicator Lights
7,000-lb Axles with Ultra Lube
7,040-lb Load Range E-Rated HD Tires
Aluminum Quad Entry Steps
Dual Gas Tanks (40- and 30-Gallon)
Exterior Convenience Center with Hidden Water Connections
Fiberglass Front Cap
Fold Down Exterior Roof Ladder
Full Size 30" Entry Door with Slider Window
Fully Walkable Roof
Generator Prep with Hour Meter and Interior Start/Stop Switch
Ground Effects Light Package
Heated and Enclosed Underbelly (Forced Heat)
Large Electric Awning with LED Lights
LED Exterior Lighting
LED Front Cap Lights
MORryde CRE 3000 Suspension
Nitro Fill Tires
Omni Direction Cable/Satellite Antenna

Outdoor Speakers
Partially Painted Front Cap
Pillow Style Cherry Hardwood Cabinet Doors
Pump Station Timer Switch
Solar Prep
Spare Tire with Carrier
Tinted Safety Glass Frameless Windows
Upgraded Graphics
Upgraded Graphics with 3-Year Warranty
Vented Attic
Water Heater By-Pass
Zero G Ramp Door by MORryde
GARAGE PACKAGE
LED TV
2 Indoor and Outdoor Speakers
2,500-lb Tiedowns
22" Diamond Plate
5' Safety Glass Patio Door with Screen (Select Models)
Full Size 30" Entry Door with Screen and Gas Strut
Indoor/Outdoor Speaker On/Off Switch
Insulated Heat and A/C Ducts
Metal Ram Air Vents (2)
Privacy Curtain with Tieback (Select Models)
Tuff Ply Gas and Oil Resistant Flooring
Upgraded Wood Entrance Door with

Glass Insert (Select Models)
Wall To Wall Dovetail Storage
Washer/Dryer Prep
GENERATOR OPTIONS
Generator Ready (Generator Prep)
Onan 5.5-kw Gas Generator
OPTIONS
Dual Pane Safety Glass Windows
G-Rated Radial Tires
Ramp Door Patio w/ Entry Steps and Awning
Removable, Edged Cargo Carpet
Three Season Patio Door IPO Screen Wall
Voltage Chair
Voltage Logo Deck Chairs (2 per Box)
CUSTOM FULL BODY PAINT OPTIONS
Black and Blue Paint
Black and Red Paint
Earth Tone and Burgundy Paint
Gel Coat Glass Upgrade
CODES & SEALS
CSA Construction and Seal
RVIA Seal
State Seal (where applicable)
Winterization (Oct - April)

EPIC SPECIFICATIONS

FLOORPLAN	DIMENSIONS			WEIGHTS (LBS.)			TANKS (GALS.)		
	*EXTERIOR TRAVEL LENGTH	EXTERIOR WIDTH	EXTERIOR HEIGHT (WITH A/C)	**AVERAGE SHIPPING WEIGHT	DRY HITCH WEIGHT	CARGO CARRYING CAPACITY	***FRESH WATER CAPACITY	GREY WATER CAPACITY	BLACK WATER CAPACITY
3890	43', 0"	100"	159"	15,988	3,481	4,012	160	114	96
3970	43', 10"	100"	160"	16,244	3,546	3,756	160	90	45
3990	43', 9"	100"	160"	16,340	3,432	3,660	160	90	90
4150	44', 1"	100"	160"	16,820	3,913	3,180	160	107	83

*Length is defined as the distance from the centerline of hitch pin/coupler to rear bumper of trailer. **Our weights represent how most units are built, inclusive of many commonly-ordered options. ***Fresh water capacity includes water heater capacity.

STEP UP **YOUR
ADVENTURE**

VOLTAGE
EPIC
SERIES



Dutchmen—A North American Campground Classic

Few manufacturers have built RVs for 25+ years, and only one has set the standard for innovation AND value. Dutchmen IS “A North American Campground Classic.”



Dutchmen[®]

Legendary Innovation. Trailblazing Value.

MORE STANDARD FEATURES MORE VALUE

Dutchmen RVs turn more heads on the lot and in the campground than any other. Why? While other manufacturers offer features as options, Dutchmen tends to make those same features standard. Call it “bang for the buck,” “more for your money,” or simply “more value.” **We’ve built a reputation for bringing RV owners more standard features for less money** for more than 25 years... and it’s a reputation we plan to keep.

PO BOX 2000 • 2164 Caragana Court • Goshen, Indiana 46527 • Sales: 574.537.0600 • www.dutchmen.com

EPIC-HM0117-24K

3000
STRONG
NATION WIDE DEALER NETWORK

More than 300 Dutchmen dealers across North America and our industry-leading service center in Goshen, Indiana, combine for your peace of mind before, during and after the sale. Rest assured no matter where your travels take you, **the best-resourced RV manufacturing company in the world is behind you all the way.**

To check for recent updates to floorplans and specifications. Scan this QR CODE with your favorite QR Reader application.



www.dutchmen.com

Visit us online to see all of the Dutchmen brands, innovative models and spacious floor plans.



At Dutchmen, quality is our standard. **Every single Dutchmen RV that comes off the line receives its own pre-delivery inspection.** Typically, a competitor performs random inspections, meaning you won’t find this commitment to quality anywhere else.

Your local dealer

**LaMESA REC
VAN**

LaMesaRV.com
800-496-8778

From giving advice to servicing products, we consider our loyal dealers the best resource for learning about Dutchmen products.